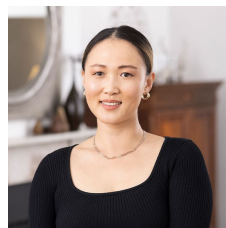


10/705 Pacific Highway Gordon NSW

3 1 1

Offering an incredible approx. 118sqm of space on title, this full brick security apartment enjoys a spacious layout with lounge and balcony basking in the sunny north aspect. Set well back from the highway in an elevated position. Exceptional convenience in the vivacious centre of Gordon, where a short stroll takes you to the rail and buses, eateries, boutiques, and Gordon Centre shopping. Separate living and sleeping zones deliver practicality for young families. The extra-large modern eat-in kitchen showcases a selection of high-quality appliances including a gas cooktop, oven, and dishwasher, paired with plentiful storage and counter space. Bedrooms centre on a renovated bathroom and separate powder room. In Killara Public, and Killara High zones, Ravenswood around the corner. Stroll to rail for an easy commute to Chatswood,

Type : Apartment
Price : \$ 1,070,000
Building Size : 118 sqm
View : <https://www.themarshallgroup.com.au/6927698>

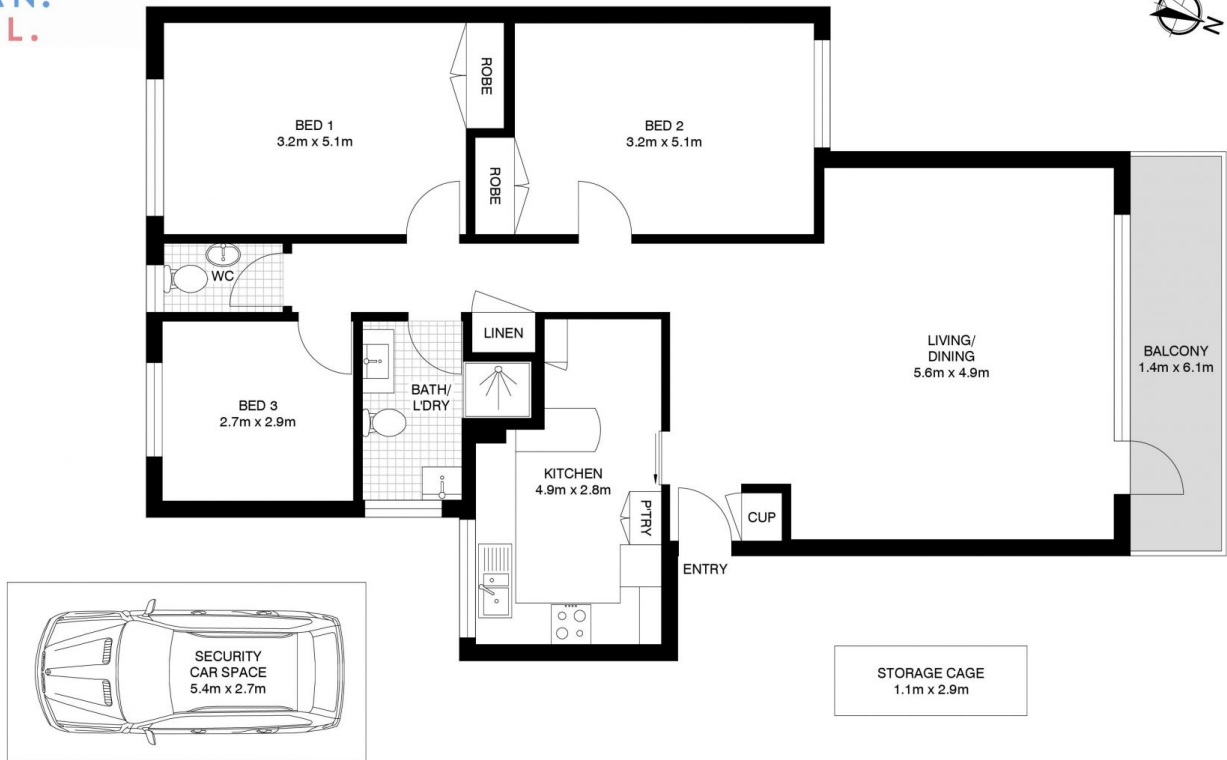


Jessica Liu
02 9061 3175



Craig Marshall
02 9061 3175

[For full version visit the website](https://www.themarshallgroup.com.au)



10/705 PACIFIC HIGHWAY, GORDON

APPROX. INTERNAL FLOOR AREA: 103m²