

25 Kanoona Avenue St Ives NSW

3 2 2

There are only a handful of properties next to the St Ives Village Green and this stunning full brick single level home brimming with character is one of them. This pretty as a picture residence sits on level North facing gardens within a quiet leafy cul-de-sac with so much on its doorstep. With high ceilings, great indoor/outdoor flow, and an open fireplace this stunning home has it all. Mere footsteps to St Ives village, bowling club and transport links, coupled with being in St Ives North catchment zone. This opportunity doesn't come along often.

? Full brick single level home in tightly held enclave of St Ives Village
? Generous formal lounge and dining with high ceilings and open fireplace

Type : House

View : <https://www.themarshallgroup.com.au/6992612>



Nicky Tanner
02 9061 3176

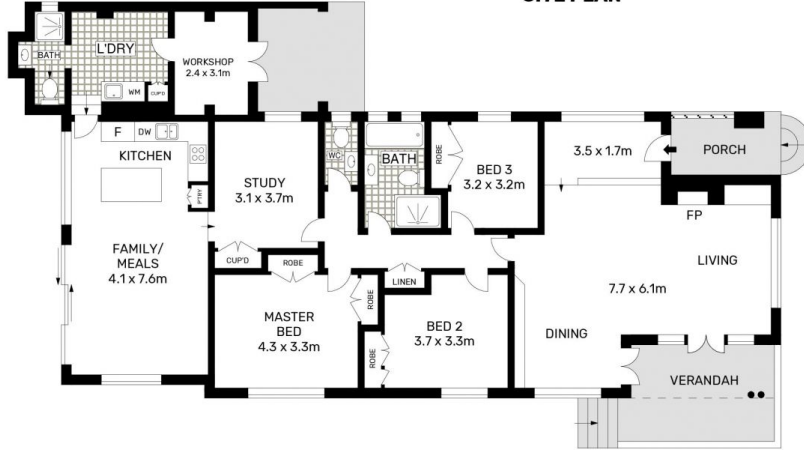


Brenton Higgins
02 9061 3175

[For full version visit the website](https://www.themarshallgroup.com.au)



SITE PLAN



25 KANOONA AVENUE, ST IVES

APPROX. INTERNAL FLOOR AREA: 174 SQM
APPROX. TOTAL FLOOR AREA: 203 SQM