



22 Jubilee Street Wahroonga NSW

2 1 1

Make a clean sweep of this property and utilise the inspiring 923sqm parcel of level, north facing land to create your dream home. The unsalvageable cottage, in situ, is ripe for demolition opening the space for modern living in this high-quality family location. The dual street position offers excellent access and flexibility of design. Brimming with sunlight across the wide Spurgin Street elevation. Walk to Waitara rail and an array of nearby sporting facilities. Set in Waitara Public School zone, and close to some of Wahroonga's best private schools. Easy access to Hornsby Hospital and Westfield's retail and entertainment precinct.

? Impressive rebuild opportunity with dual street access, 923sqm of level land

[For full version visit the website](https://www.themarshallgroup.com.au/7019178)

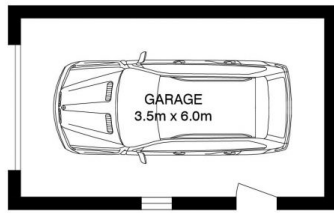
Type : House
Price : \$ 1,890,000
Land Size : 923 sqm
View : <https://www.themarshallgroup.com.au/7019178>



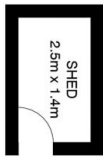
Carl Ferris
02 9061 3199



Donna Ferris
02 9061 3199

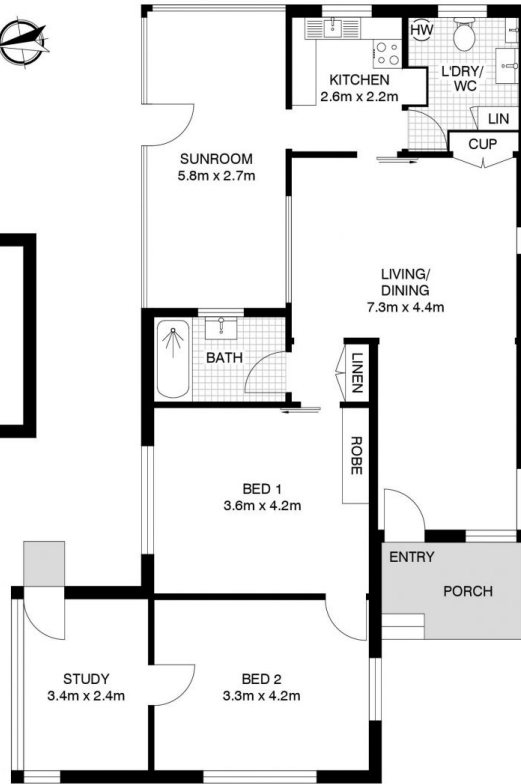


AT REAR



AT REAR

FLOOR PLAN



SITE PLAN

22 JUBILEE STREET, WAHROONGA

APPROX. INTERNAL FLOOR AREA: 101m²