



20 Rosedale Road Gordon NSW

4 2 2

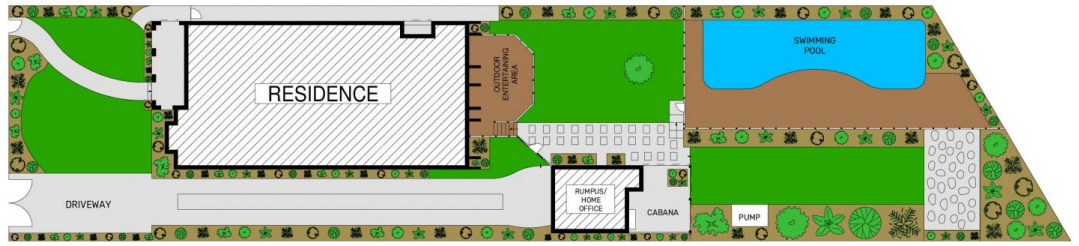
Tucked peacefully behind motorised gate entry, this magnificent circa 1930's character charmer basks in a spectacular 1,179sqm level parcel in Gordon's prestigious east side. A veritable park-like sanctuary just 500m from the train station, a sympathetic renovation merges timeless period fixtures with a sophisticated contemporary palette to provide the quintessential resort-style haven for families of every age. Highlighted by elegant architectural curves, intricate leadlight windows, rich timber fixtures and lofty patterned ceilings, a spacious single level is tailored for today's relaxed indoor/outdoor lifestyle. Cascading to a tropical garden oasis enveloped by manicured lawns and deck-side heated pool, beyond a meandering sandstone driveway enjoy a leisurely stroll into the heart of the village for a wonderful mix of cafés, shops and dining options with

Type : House
Price : \$ 4,330,000
Land Size : 1179 sqm
View : <https://www.themarshallgroup.com.au/7481597>

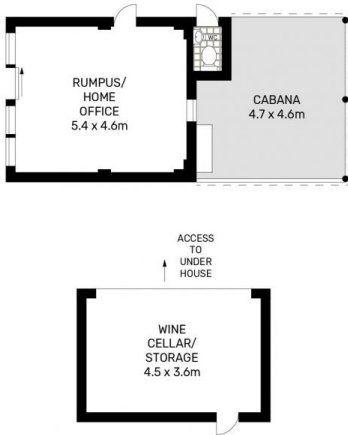


Kate Wexler
02 9061 3175

[For full version visit the website](https://www.themarshallgroup.com.au)



SITE PLAN



20 ROSEDALE ROAD, GORDON

APPROX. INTERNAL FLOOR AREA: 252 SQM

APPROX. TOTAL FLOOR AREA: 348 SQM