



**72/1 Womerah Street Turramurra NSW**

2 🛏️ 2 🚿 2 🚗

Sold by Jill Smith and Patrick Huang  
East side located modern apartment complex  
Guaranteed to impress, this expansive penthouse level apartment presents a substantial layout radiant with natural light from the ideal northeast aspect. Exemplifying an indoor-outdoor entertainer's lifestyle, the open living and dining area blends with a vast multi-zone terrace-style balcony through a wall of glass sliding doors. Large windows frame restful tree-top views across the Upper North Shore. Every modern comfort has been applied including Miele appliances in the stone kitchen and designer styling to the sleek contemporary bathrooms. Families will love the communal garden with barbecue area, the convenience of walk to rail, buses, village shops and Café, with easy access to parks and renowned

**Type** : Unit  
**Building Size** : 151 sqm  
**View** : <https://www.themarshallgroup.com.au/8141933>

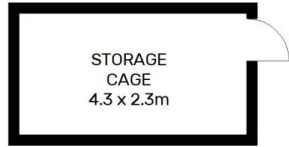


**Jill Smith**  
02 9061 3199

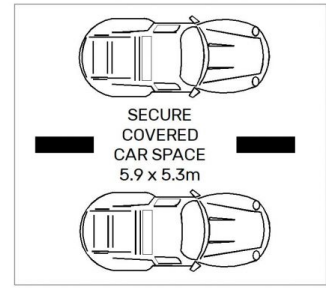


**Patrick Huang**  
02 9061 3199

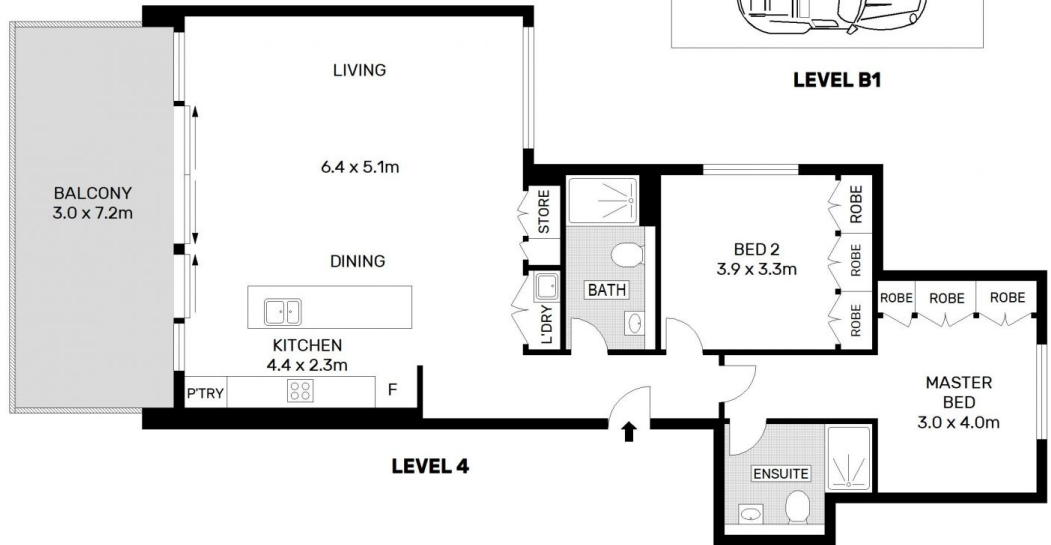
[For full version visit the website](https://www.themarshallgroup.com.au)



LEVEL B1



LEVEL B1



72/1 WOMERAH STREET, TURRAMURRA

APPROX. INTERNAL FLOOR AREA: 95 SQM

Scale in meters. Indicative only. Dimensions are approximate. All information contained herein is gathered from sources we believe reliable. However we cannot guarantee its accuracy and interested persons should rely on their own enquiries. @www.creativepropertymarketing.com.au